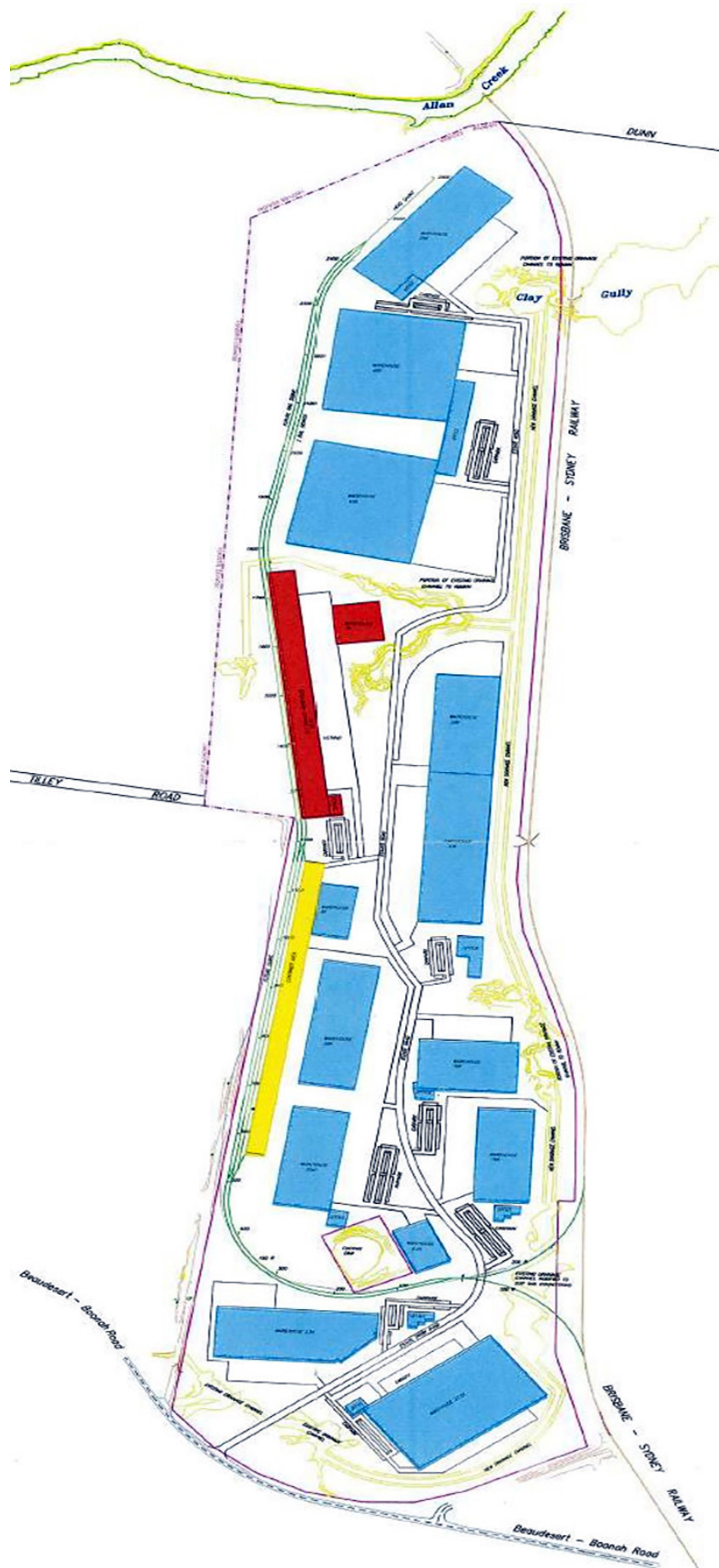


This aerial map displays the Beaudesert-Boonah Road area, featuring several industrial sites and infrastructure. A pink dashed line outlines a specific area of interest, which includes a red rectangle highlighting a building. The map also shows the 'BROOKING - STONEY RAILWAY' and 'BEAUDESERT - BOONAH ROAD'. Other labels include 'Allan Creek', 'Penny', 'Clay', 'Gully', and '90'. The map is oriented with North at the top.

SCT Bromelton Precinct - Site Plan



Legend

Stage one of the SCT intermodal facility is highlighted as follows:

- RED - intermodal infrastructure
- YELLOW - container area
- GREEN - rail track

Proposed warehouses in future stages are outlined in BLUE

SCT Bromelton Precinct - Aerial Map

