

Scenic Living

SCENIC RIM REGIONAL COUNCIL NEWSLETTER – JANUARY 2016



Image courtesy SCT Logistics

\$30 million rail hub for Bromelton

Council has partnered with rail and logistics provider SCT Logistics (SCT) to secure a \$30 million intermodal freight terminal for the Bromelton State Development Area.

Construction of the new facility is expected to commence in mid 2016, with SCT to become an anchor tenant within the new industrial precinct.

It will deliver crucial foundation

infrastructure which will be the catalyst for further development by attracting other organisations to the site.

The project represents the first stage of a long-term investment, creating 125 jobs at completion, ultimately growing to 1000 once the SCT site is fully developed.

Thousands more jobs are expected to be generated in the wider industrial area from

companies seeking to co-locate to gain access to intermodal facilities.

Council secured a \$9.6 million grant under the Federal Government's National Stronger Regions Fund to facilitate the project at Bromelton, announced by Deputy Prime Minister Warren Truss during a visit to the site in December.

Continued next page

INSIDE

**\$27.5 million
Beautesert Town
Centre Bypass
begins in 2016**



**Masterplan process
to create a vibrant
future for our towns
and villages**



**Congratulations to
our 2015 Scenic Rim
Business Excellence
Awards winners**



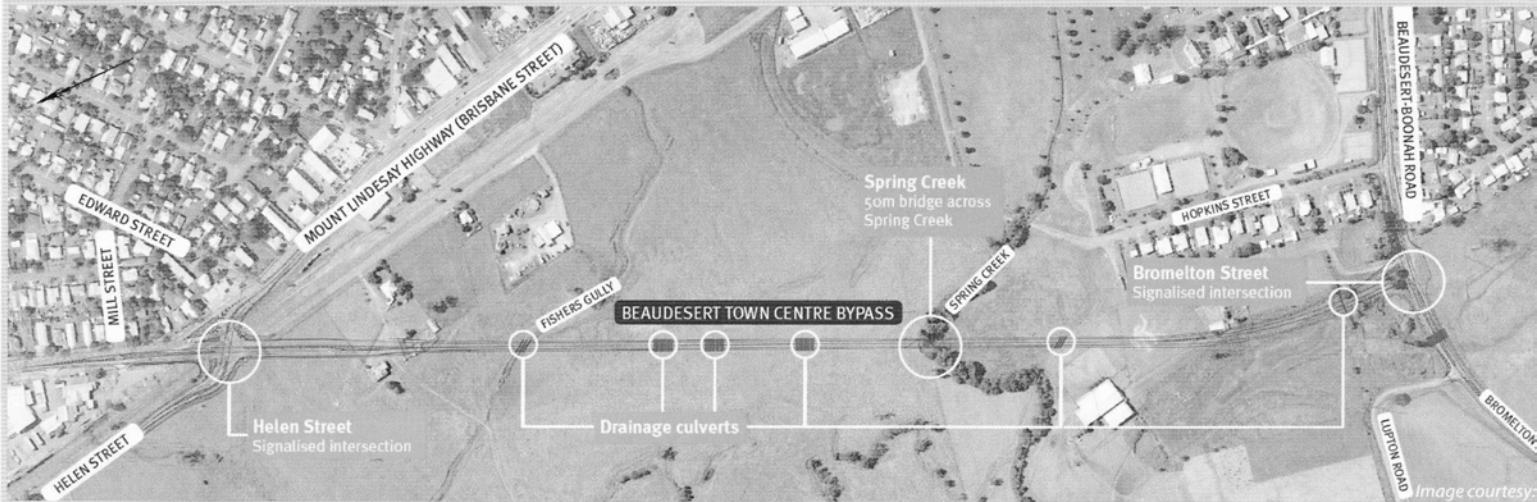


Image courtesy: [unclear]

Bypass construction only months away

Construction of the much-anticipated Beaudesert Town Centre Bypass will commence in the second half of the year, with the \$27.5 million road project going to tender in the coming months.

Council has partnered with the State Government, through Economic Development Queensland and the Department of Transport and Main Roads, to deliver the bypass. It represents the largest public infrastructure project in Scenic Rim since the construction of the Wyaralong Dam.

The bypass will realign the existing Mt Lindesay Highway west of the town

centre, via a 1.5-kilometre, two-lane road, with an 80km/h speed limit. It will commence at a signalised intersection near the saw mill and Helen St, ending at a new signalised intersection at Bromelton St (Beaudesert-Boonah Rd) and will involve the construction of a bridge crossing over Spring Creek.

Currently, the section of Mt Lindesay Highway through the Beaudesert town centre carries around 13,000 vehicles per day, with about 10% of these being heavy vehicles.

This section of road has reached capacity and it is expected the volume of heavy vehicles will continue to

increase once development in the Bromelton State Development Area commences.

The Beaudesert Town Centre Bypass will reduce the flow of heavy vehicles travelling through the town centre, greatly improving both the safety and the amenity of the main street.

The bypass will provide a more efficient, alternative route and will accommodate the predicted growth in traffic volumes on the local road network through to 2031.

Register for community updates by email to beaudesertbypass@tmr.qld.gov.au

\$30 million freight terminal

From previous page

SCT is the largest privately owned rail company in Australia with activities extending across all sectors of the industry including interstate and intrastate transport, general and refrigerated freight, mining, agriculture and ports (import/export).

The company holds approximately 130 hectares of land at Bromelton, strategically situated on the western side of the Sydney-Brisbane rail line and fronting Beaudesert-Boonah Rd (right).

The first stage of SCT's development will occupy about 10% of the site, providing ample space for future stages which could include up to 10 warehouses. The facility will provide capacity for up to 1.2 million annual payload tonnes of rail

freight movements along the north-south corridor with 795,000 annual tonnes forecast from 2020.

Not only is SCT's site strategically located on the dual gauge rail line between Brisbane and Sydney, the route of the Inland Rail Project will ultimately intersect with the existing coastal interstate line just north of Bromelton, creating a new crossroads for rail freight and intermodal logistics.

ABOUT BROMELTON

The 15,000ha Bromelton State Development Area (SDA) is located about six kilometres west of Beaudesert. It was declared a development area in 2008 to meet future demand for industrial development. About 1800ha SDA footprint has been earmarked for industrial development.



SCT's planned freight facility at Bromelton.